

**MATHA** Developers Pvt. Ltd.  
Surathkal

# MATHA

## RESIDENCY

KAUP

*Build on trust with a stylish touch...*



[www.mathadevelopers.com](http://www.mathadevelopers.com)

# MATHA Residency

A Residential Apartment situated in the NH-66, Kaup. Matha Residency is an excellent choice for those seeking a contemporary life style. This peaceful locality falls within easy reach of city, giving you easy access to all important places such as Schools, Shopping centers, Markets, Educational institutes, Railway station & places of worship. The project is a prestigious venture of **Matha Developers Pvt. Ltd.** comes to you with the promise of total quality.

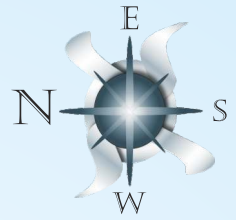
An optimum combination of appealing architecture, good planning and top quality construction ensure that every apartment at Matha Residency is an epitome of style, utility, comfort and security. The structure incorporates all essential amenities and facilities. Each 2BHK apartment is well planned to enable you to derive maximum use of available space. Good cross ventilation and direct flow of natural light are yet other appealing features that make your stay more comfortable and enlivening. With the continuing demand for good houses in the real estate section, Matha Residency will certainly prove to be wise investment for you in the future.



## SPECIFICATIONS

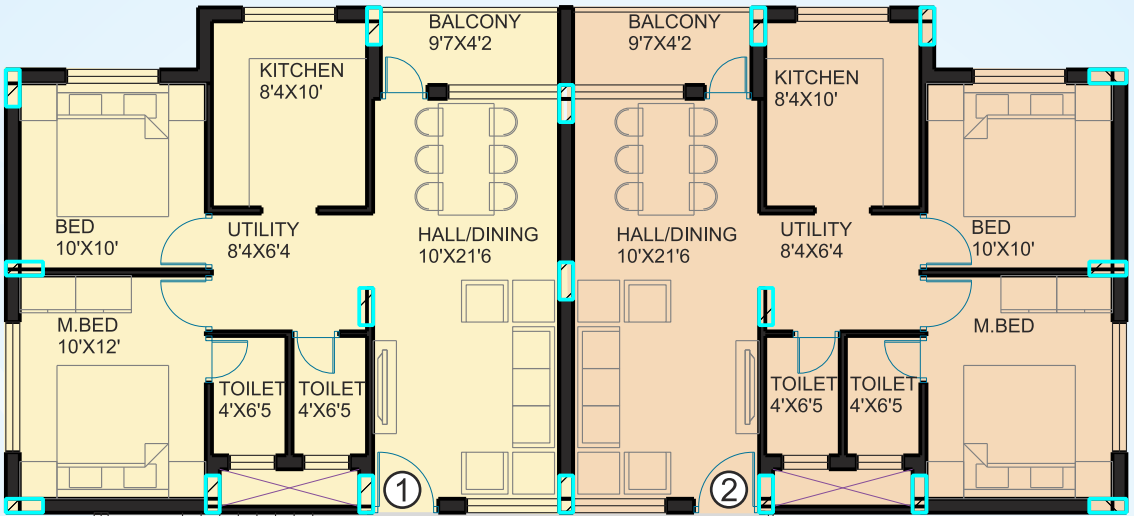
- Fully framed R.C.C Structure.
- 1 No Automatic Elevators of 6 passenger capacity.
- Vitrified tile flooring for Apartment.
- 24 Hour Power Supply.
- Design Glazed tiles for toilets & Kitchen.
- Granite Platform with stainless steel sink for kitchen.
- C.P Plumbing for toilets & Kitchen.
- Putty finished Acrylic distemper painting for walls.
- Electrical wiring using ISI standard cables and Modular Electrical switches.
- Powder coated Aluminium windows with MS safety grills.
- Bore well in addition to the Municipality water connection & over head water tank
- Split A/C Provision in Master Bed Room.
- Cable T.V provision.
- Telephone provision in Hall & Master bedroom.
- Provision of Exhaust fan in kitchen & Toilets.
- Provision for fixing water purifiers near the sink.
- Provision for Washing Machine in work area.
- Decorative Melamine polished main entrance door.
- Concrete Interlock paving for Yard & Car parking.
- Compound wall & gate.
- Project is as per the norms of Indian Vasthu.

# Typical Floor Plan



2BHK 990 Sqft

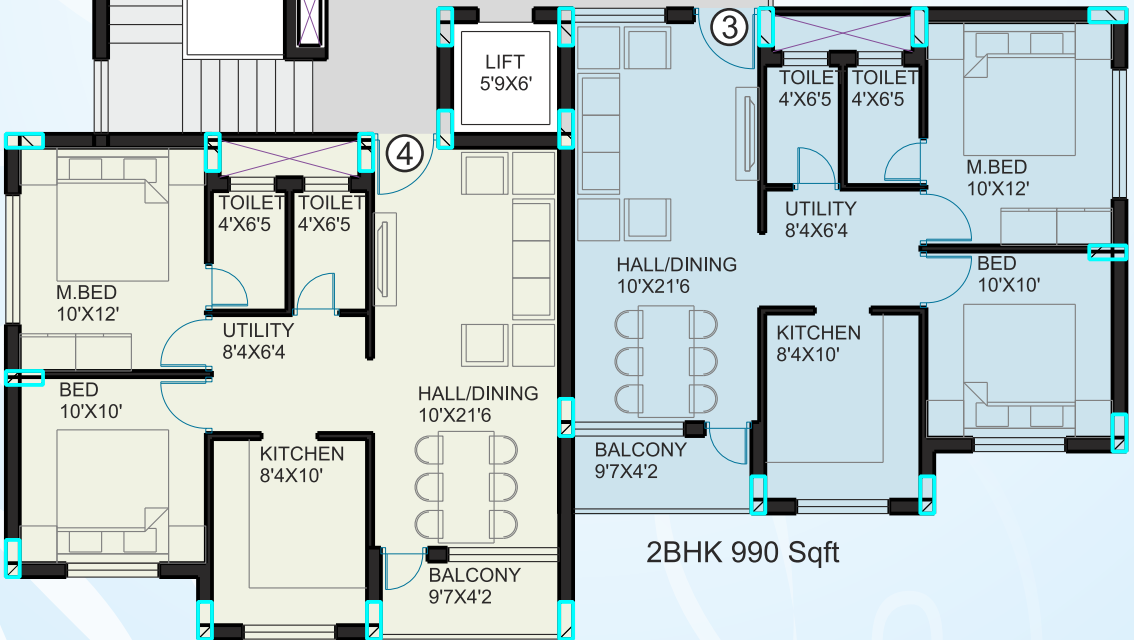
2BHK 990 Sqft



STAIRCASE  
17'9x12'9

LOBBY 6' WIDE

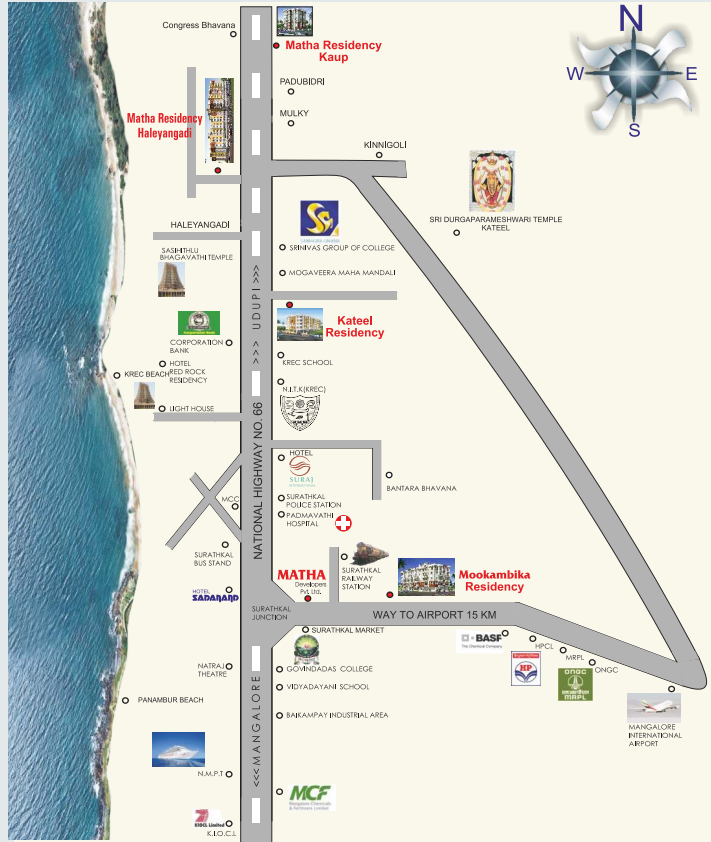
LIFT  
5'9x6'



2BHK 990 Sqft

2BHK 990 Sqft

# Location



www.mathadevelopers.com

## On Going Projects



**KATEEL** Residency  
MUKKA



**MATHA** Residency  
HALEYANGADI



**MOOKAMBIKA** Residency  
SURATHKAL

## Promoters

**MATHA** Developers Pvt. Ltd.

Thara Towers, MRPL Road, Surathkal, Mangalore 575 014

Email: mathadevelopers108@gmail.com

Ph/Fax: 0824 2475879

**Mob: 9880727966, 9449017966, 9008420283, 9880279966**

This brochure is purely conceptual and is not an offering  
The Promoters / Architects / reserve the right to add / delete / detail / specification / elevation mentioned herein